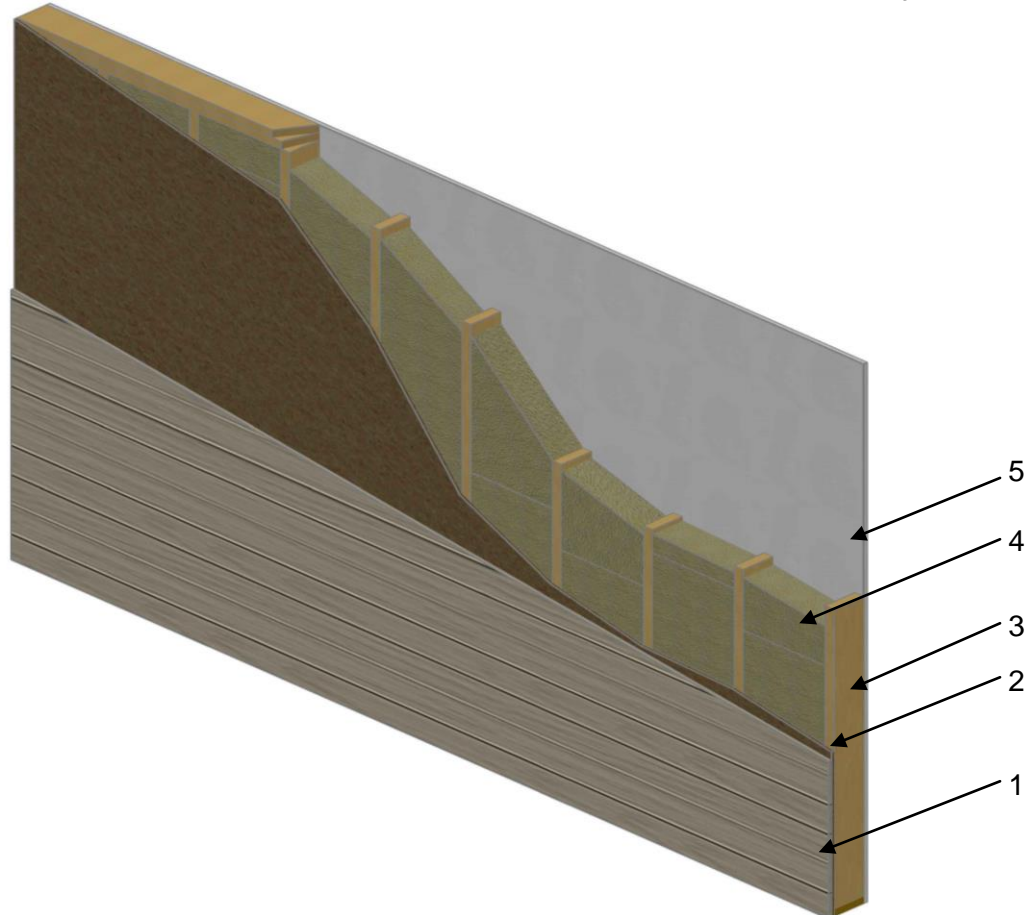


**QAI Design B1067-1a – ROXUL, Inc - COMFORTBATT™ – CAN/ULC 101  
1 Hour Restricted\* -Load Bearing Fire-Resistance-Rated Wall Assembly†**



No.	COMPONENT	DESCRIPTION
1	<b>Siding</b>	Any exterior cladding product
2	<b>Building Wrap</b>	Any Exterior Air Barrier System complying with ASTM E2178
2	<b>Exterior Sheathing</b>	Minimum 7/16 inch (11 mm) exterior sheathing
3	<b>Studs</b>	Minimum Stud Size: 2 inch x 4 inch
		Grade: Any Grade as per CSA O86*
		Species: Any Species as per CSA O86*
		Maximum Wood Stud Spaced: 24 inch (610 mm) on center
		Blocking: At horizontal drywall joints
4	<b>Insulation</b>	Certified Manufacturer: ROXUL®
		Certified Product Name: COMFORTBATT™
		Minimum R-Value: R14
		Minimum Thickness: 3-1/2 inch (89 mm)
		Nominal Density: 2.0 lb/ft <sup>3</sup> (32 kg/m <sup>3</sup> )
5	<b>Vapour Barrier</b>	Any vapour barrier system meeting CAN/CGSB-51.34-M
5	<b>Gypsum Board</b>	Type: Type X gypsum wallboard complying with ASTM C1396
		Thickness: Single layer of 5/8 inch (16 mm)
		Application: Sheathing is to be fastened to studs with 1-1/4 inch (29 mm) length #6 Type S screws spaced at 8 inches (200 mm) on center around the perimeter, and 12 inch (305 mm) on center spacing in the field. Joints to be taped and mudded, and fastener heads to be mudded as per CSA A82.31-M

\* Restricted-Load Bearing - Load rating for this assembly was calculated and tested using the limit states design method outlined in CAN/ULC S101 – Appendix C with a load reduction of 18%. An 18% reduction in the factored resistance for any wood stud assembly designed as per CSA O86.

† This assembly is rated for an interior fire **only**